

MILC & NFILC



Mark Arundell

NSWMC Exploration Committee –
NFILC representative

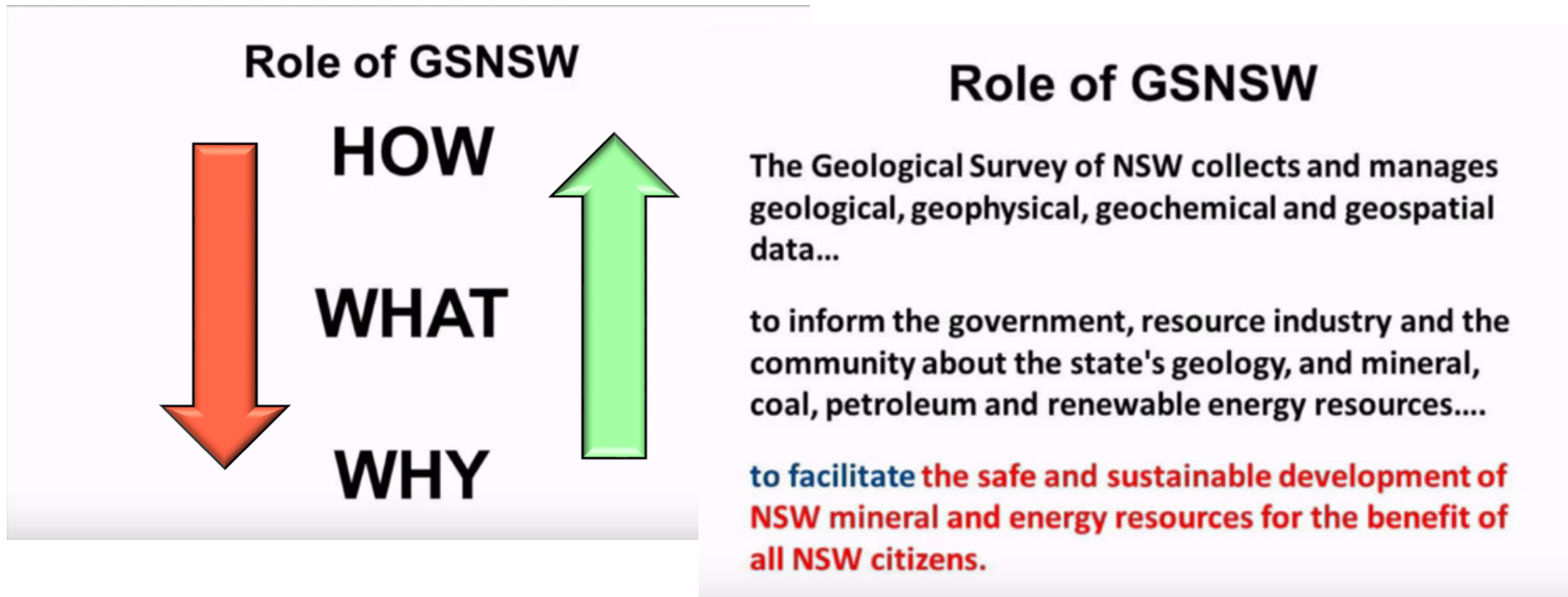


MILC



- Minerals Industry Liaison Committee
 - *Quarterly Meetings*
 - Stamp Duty
 - Site Inspections
 - Land Access – New legislation – Hume Coal prosecution
 - IMER Review (*need assistance!*)
 - **Publication of Community & Environmental/
rehabilitation reports**
 - **Publication of Work Programs**
 - Compliance – Hume Coal - \$92K
 - **Renewals & Title Processing**

From Exploration in The House



- *It is really important that we, as a government agency, we keep an eye on that prize*

Yeats, 2016, EITH.

➤ New Frontiers Industry Liaison Committee (*Biannual*)

➤ Five Year Aims

Theme / Goal	Five Year Aim
1. Explore NSW	To rejuvenate NSW exploration activity by attracting new investors into resource projects and new exploration companies coming onto NSW ground.
	Increase exploration activity by 25% by July 2021 based on EL area and total metres drilled.
2. Acquisition and synthesis – Minerals	Reduce exploration risk through data acquisition projects with geological mapping, geophysics and mineral systems
	Delivery of a seamless 3D geological model of NSW that includes the completed Seamless Geology project and new 3D basin models.
	Mineral system potential maps that build on metallogenic mapping and mineral deposit models across the state, then applied to the seamless geology as a thematic map layer
	Incorporation of coal and petroleum resource volumes into NSW 3D model
	Collaboration with academic, government and industry partners focussed on testing geodynamic models that define new fairways of mineral potential
	New acquisition - geophysical acquisition in key frontier areas with low data confidence

NFILC



Theme / Goal	Five Year Aim
3. Acquisition and synthesis – Petroleum	Deliver 3D models for Cl... Darling and Eromanga basins Re-interpretation
	3D petroleum system modelling... may be prospective to release as new PELs Re-interpretation
4. Geoscience Information	Initial work in 2015-16 will see the comp... analysis to underpin preparation and planning for projects ur... Compilation
	A 3-year business plan for acquisition of ICT se... infrastructure to facilitate the online delivery of a 3D geological... W will also be developed to match requirements Compilation
5. Cooperative Drilling	An ongoing biennial \$2 million program delivering ne... discoveries and increased geological understanding of NSW mineral p... New Data!

All Projects to be rated on : ***New Data, Re-interpretation & Compilation***

NFILC



➤ Strategic

- >80% money from coal
- 2016/17 Budget : **\$M** (65% salaries) + \$2m Co-op Drilling

Theme / Goal	Key Performance Indicators
Measure of Project Success	<p>KPI based on number of new ELs/ELAs (not renewals) and total area under exploration tenure.</p> <p>KPI based on number of new ELs/ELAs (not renewals) and total area under exploration tenure where Geol Survey work has been / is being completed (e.g. East Riverina, Thomson).</p> <p>KPI based on number of “new” companies</p> <p>KPI based on the factor of \$1 government money should equate to \$10 company money spent in ground (note SA uses 1:20)</p>
Data Acquisition	<p>KPI based on proportion of total budget spent on New Data. Suggest this would vary but 50% would be a minimum target. Other Re-interpretation & Compilation</p>