



Unity Mining Ltd.
Update on the “*Golden Granodiorite*”
The Dargues Project NSW

Angela Lorrigan - Sept. 15th 2015

Project fundamentals

- Located approx. 60km SE of Canberra
- Planned underground mine to produce approximately 50,000oz gold pa. over an initial 5 year mine life
- Resources: 1.6Mt at 6.3g/t for 327 koz gold
- Reserves: 1.4Mt at 5.2g/t for 233 koz gold
- Deposit remains open at depth
- Road, sediment control and box cut complete, on care & maintenance

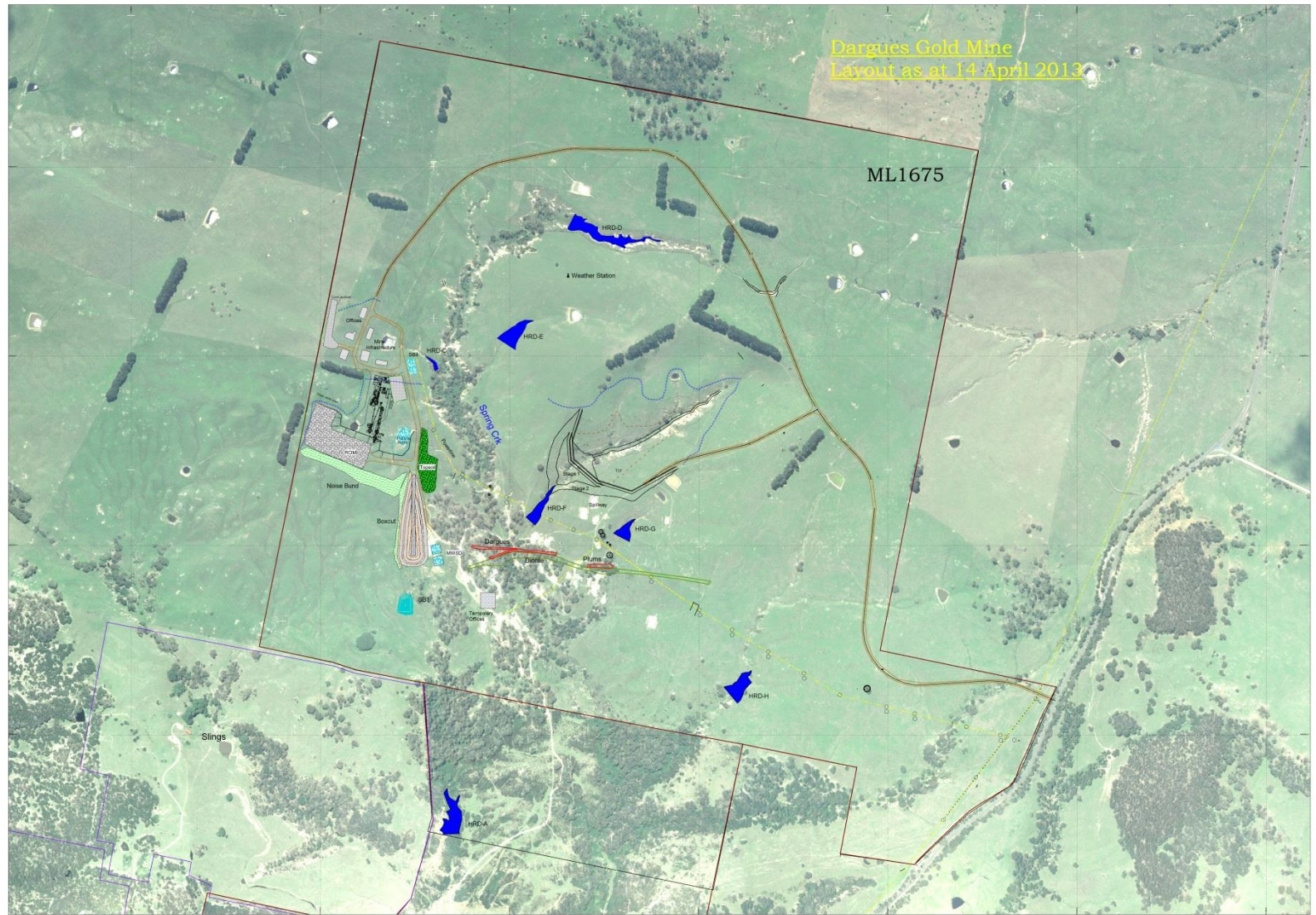
Current status

An application to modify the existing project planning approvals — in the form of a comprehensive Environmental Assessment — was submitted to the NSW Department of Planning & Environment.

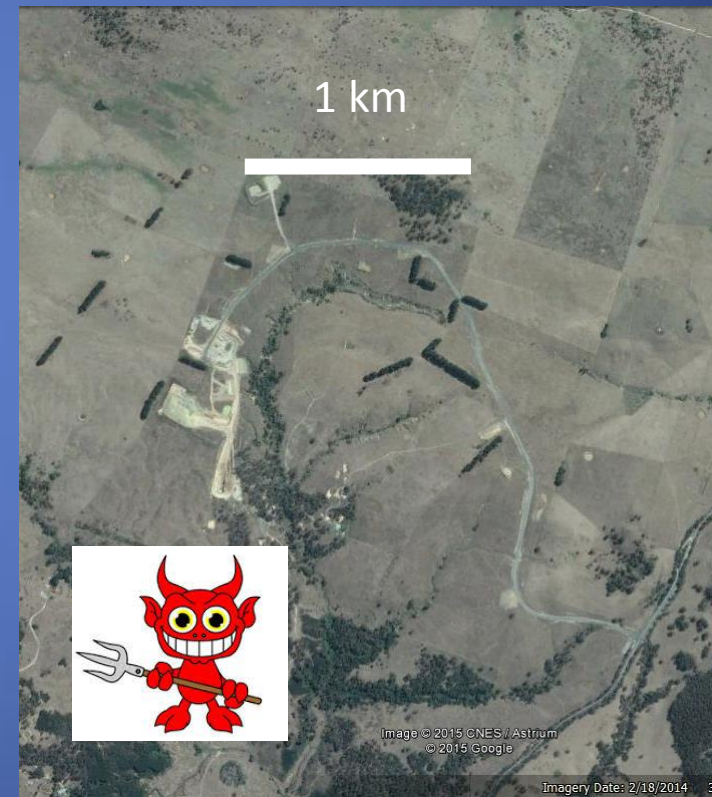
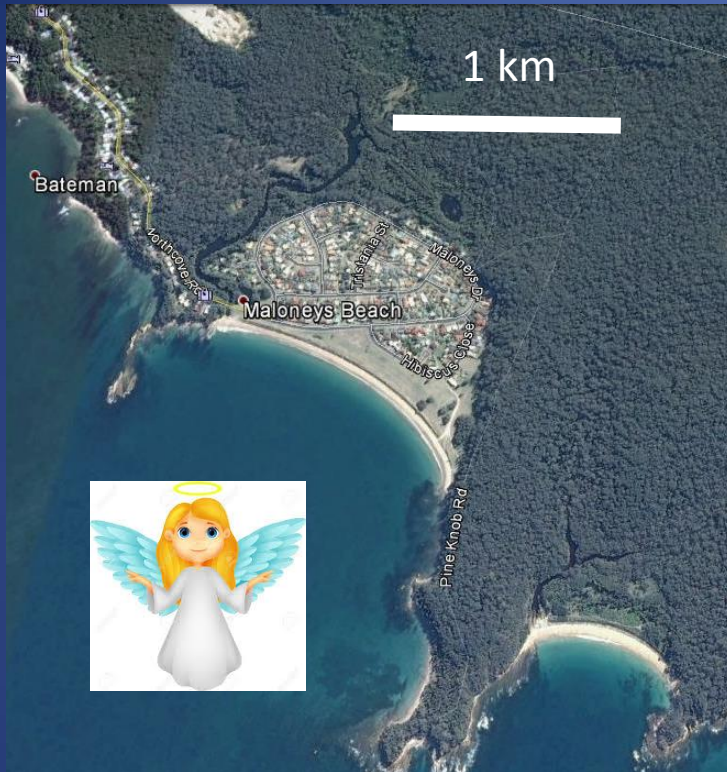
The Environmental Assessment was accepted and lodged for Public Exhibition for a period that ended last week.

Dargues Gold Mine
Layout as at 14 April 2013

ML1675



Development comparisons



Flooding in urban areas – it all goes down the drain



“Huge mounds of debris and rubbish litter North Wollongong beach”

Illawarra Mercury 3rd Sept. 2015



“Enough of the rubbish”

Finding the fastest way home

PUBLIC TRANSPORT VICTORIA **PTV**

Home Tickets Getting around News & events Projects About PTV Customer service

Journey planner Timetables Next 5 departures Live travel updates myki

SERVICE DISRUPTION INFORMATION

Sunbury line

Quick picks

- > Download the PTV mobile app
- > Public transport to events in Melbourne
- > Daily performance record
- > Free Tram Zone and Zone 1+2 information

Daily performance

Updated Mon 1 Jul, at 10:15pm

99.7% Delivery

94.3% Punctuality

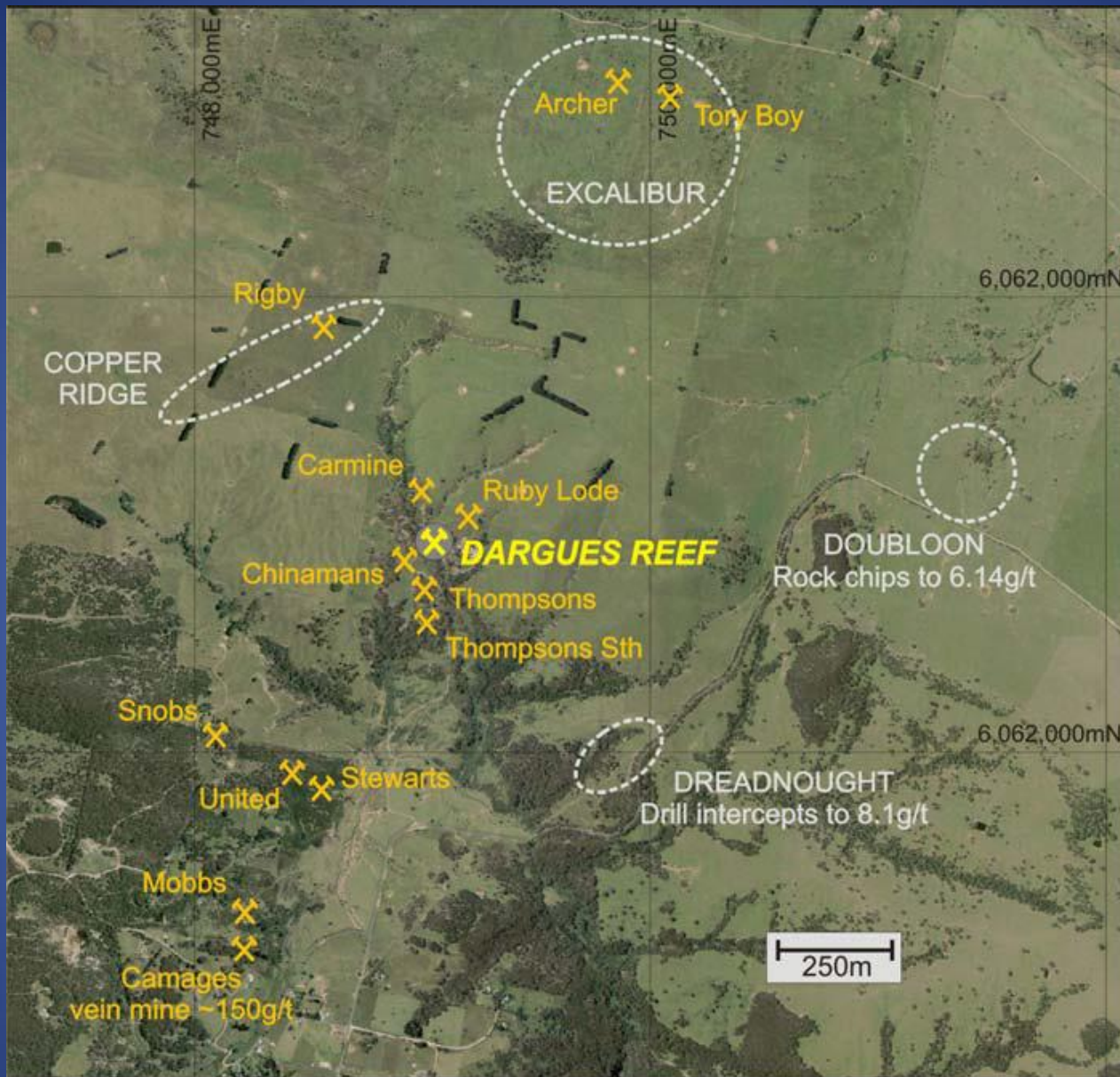
Find out more.

Journey planner
Leaving from
Station, stop, landmark or address
Going to

Next 5 departures
Trams Trains Buses
Station or stop

Manage your myki

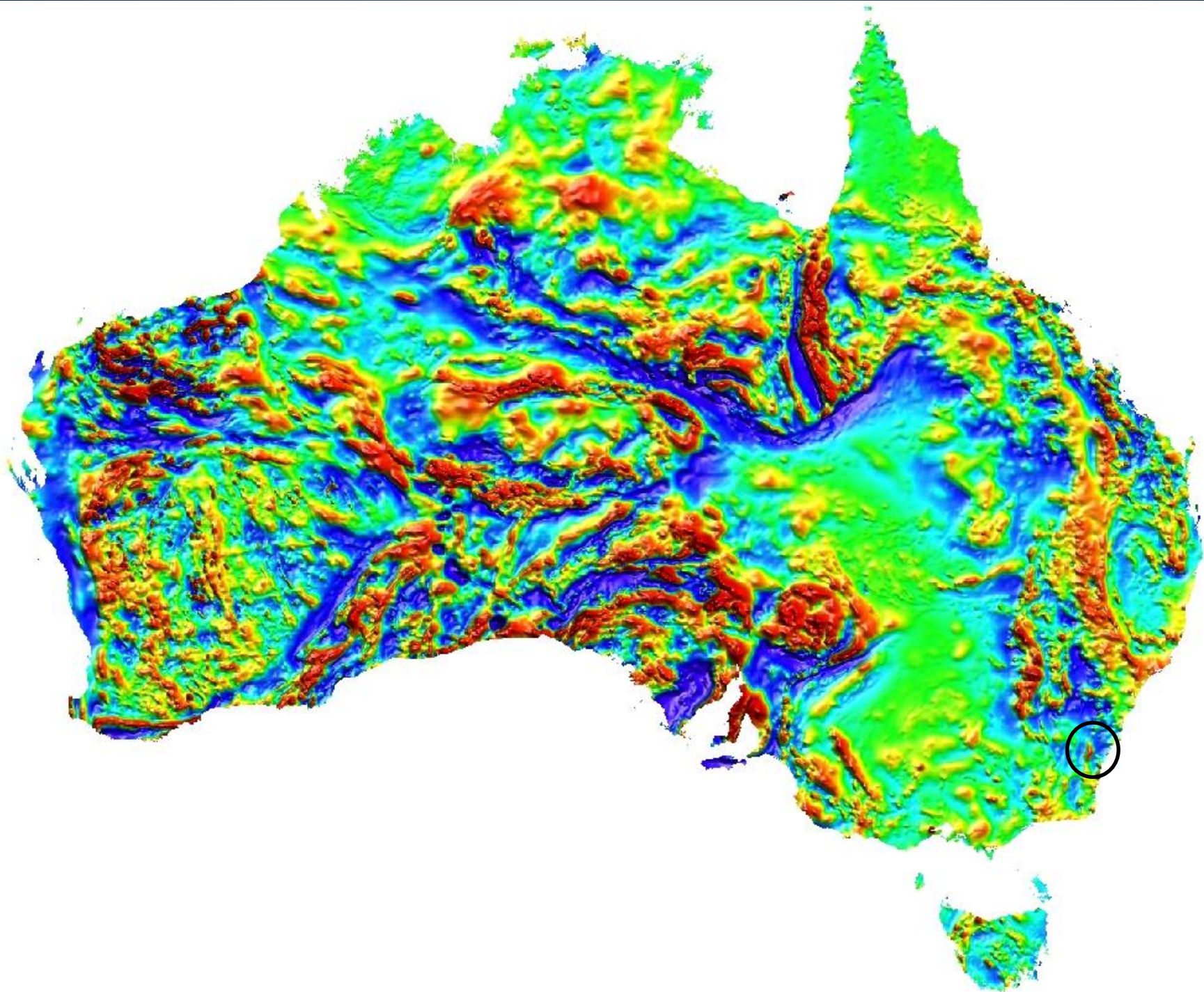
siteprice.org

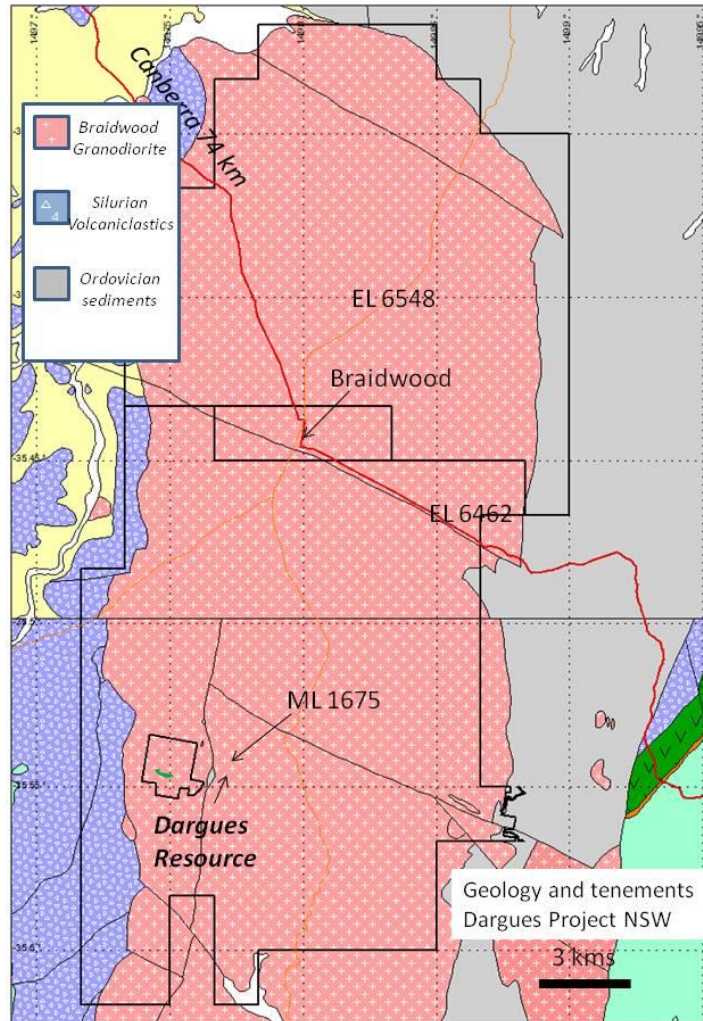


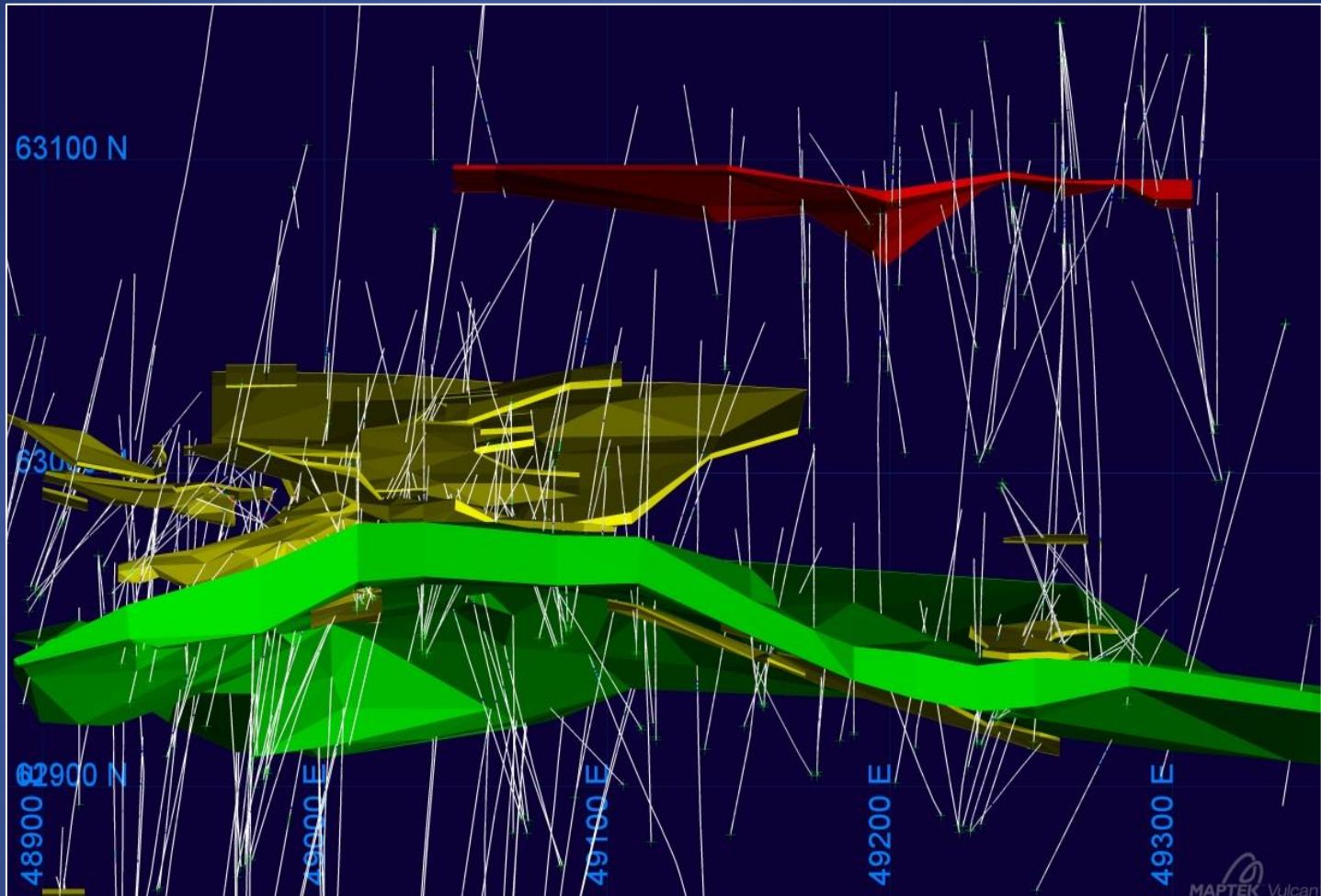
Development of an exploration strategy?

What does the mineralisation look like?

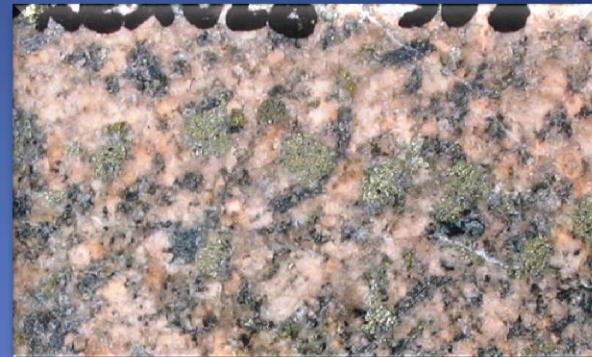
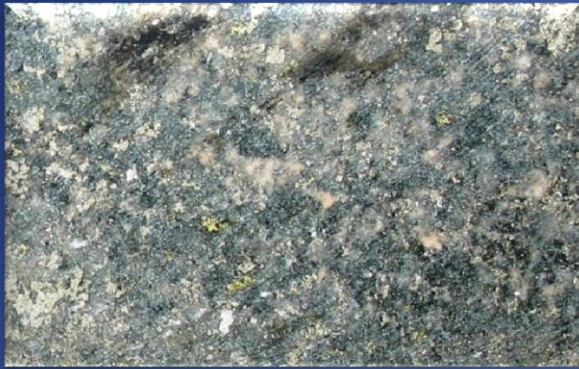
What are the main features that will help find it?





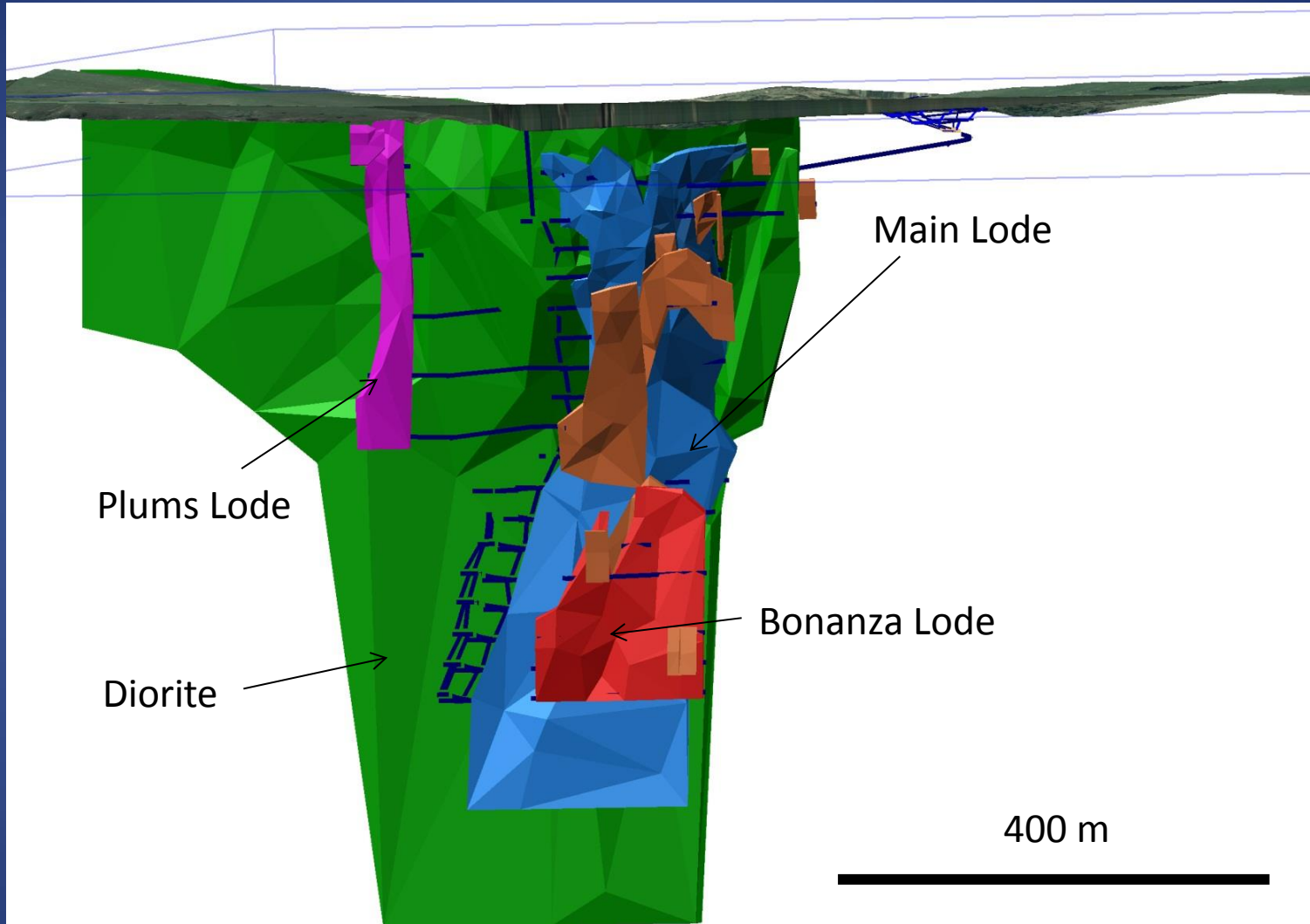


Plan view – Diorite = green; Resource = yellow; and Ruby min. = red

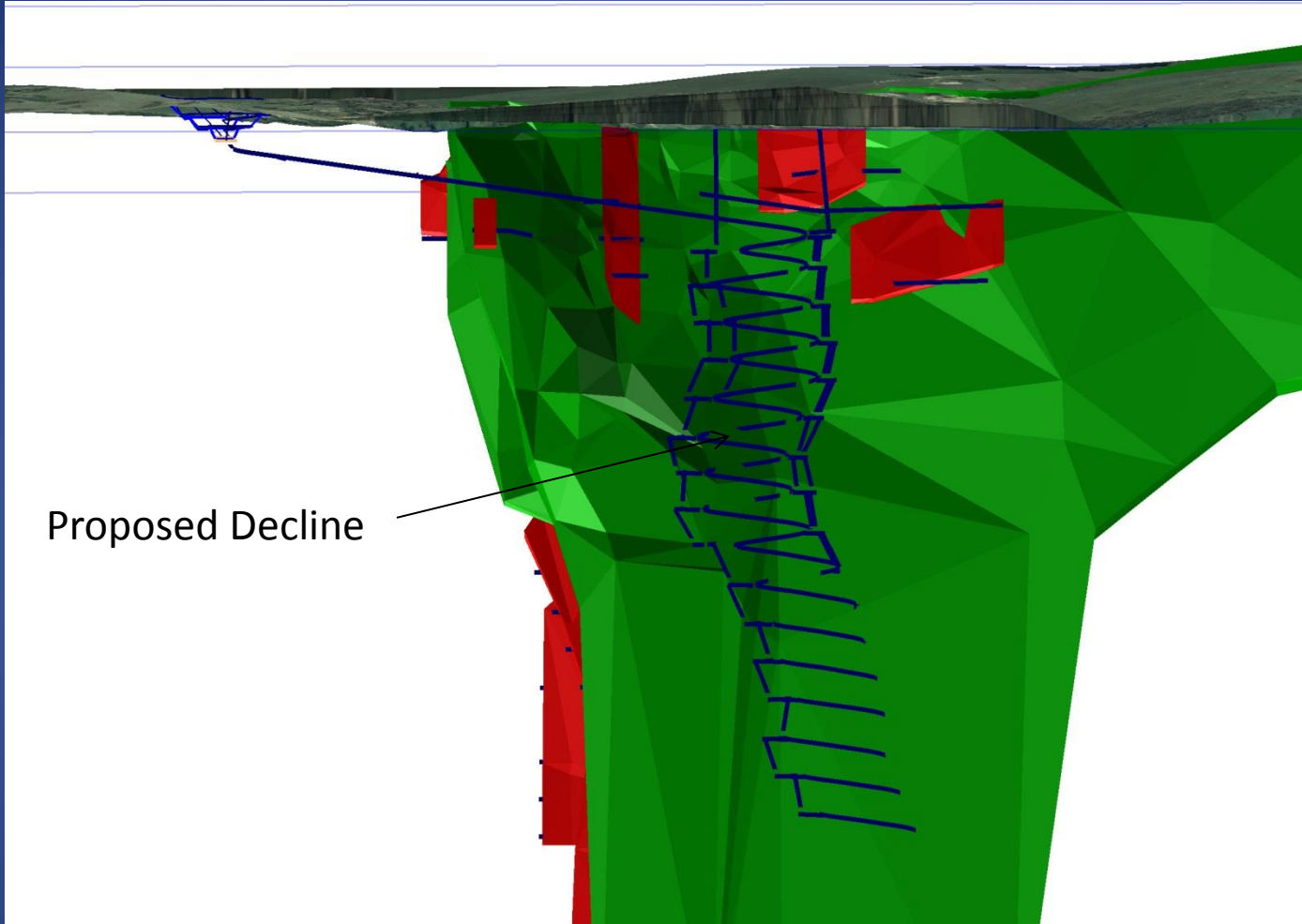


High Grade Phyllic Lode
5-20 g/t Au
Ser/Chl/Carb/Py /Mag. dest.

Med. Grade Felsic Lode
5-20 g/t Au
Alb/Haem/Carb/Py +/- Chl/Ser
Mag. dest.



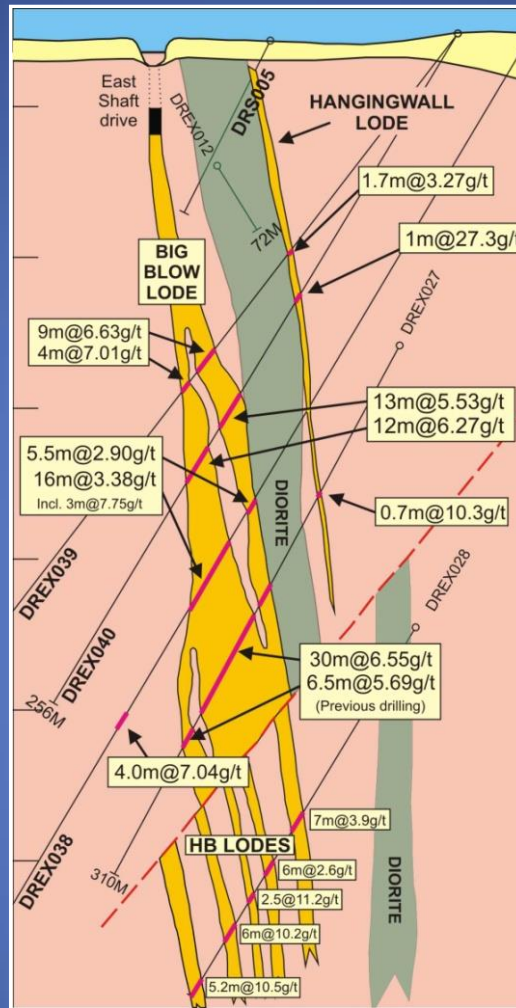
Dargues Looking South



Proposed Decline

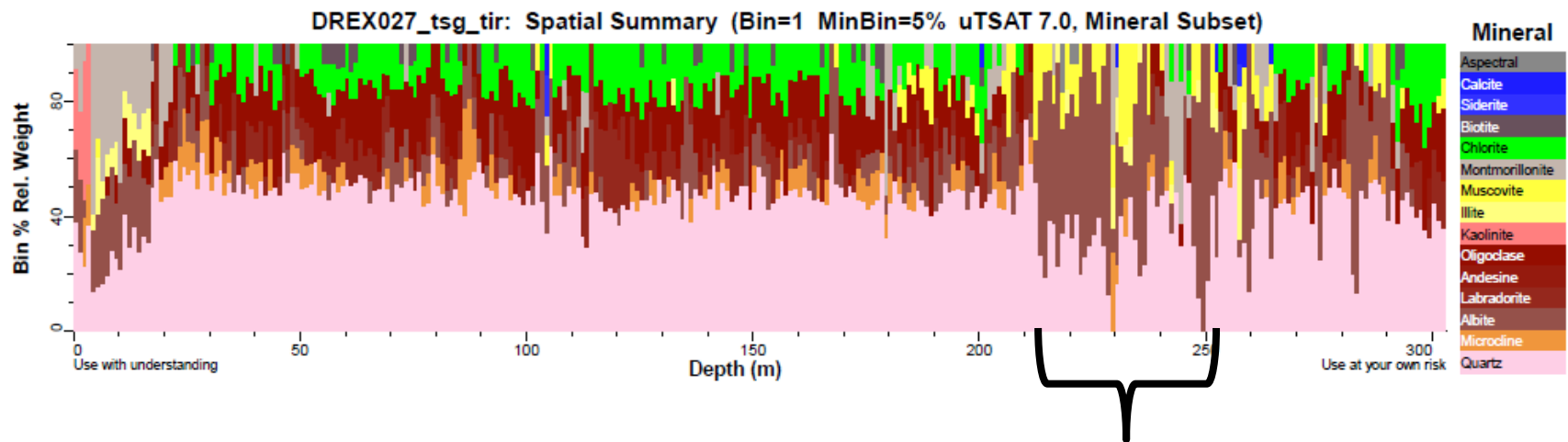
Dargues Looking North

100 m



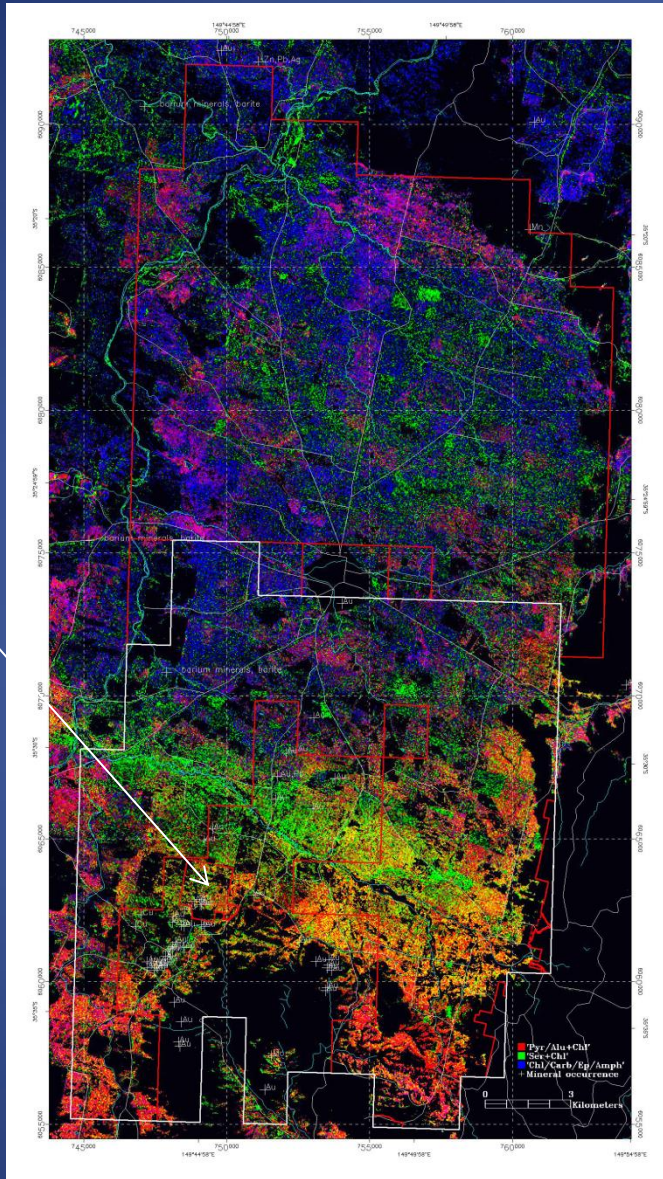
Cross section view

Hylogger data DREX27



Main Gold Zone

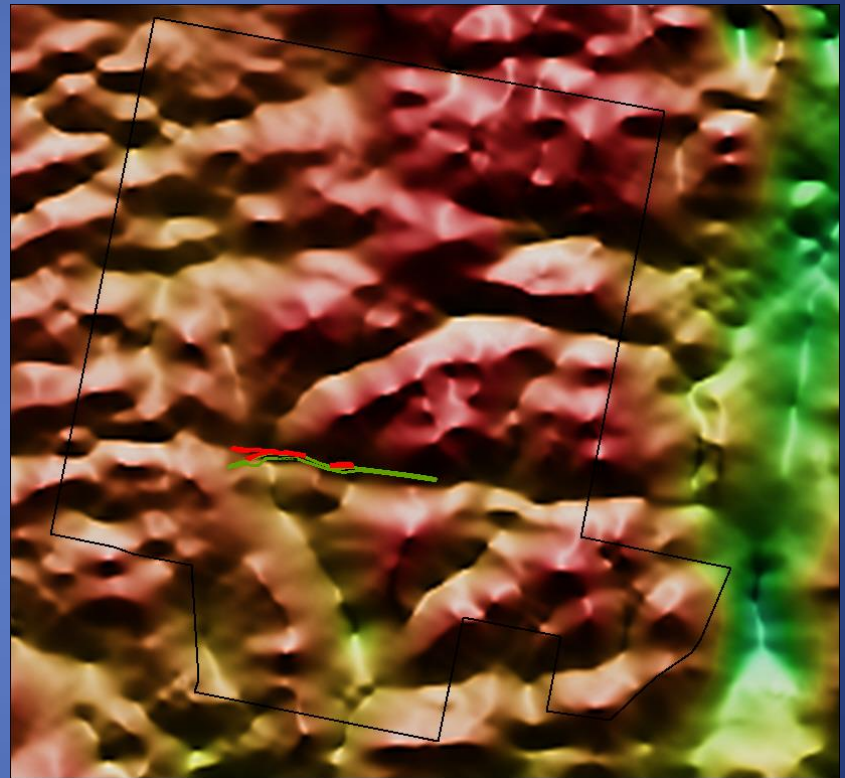
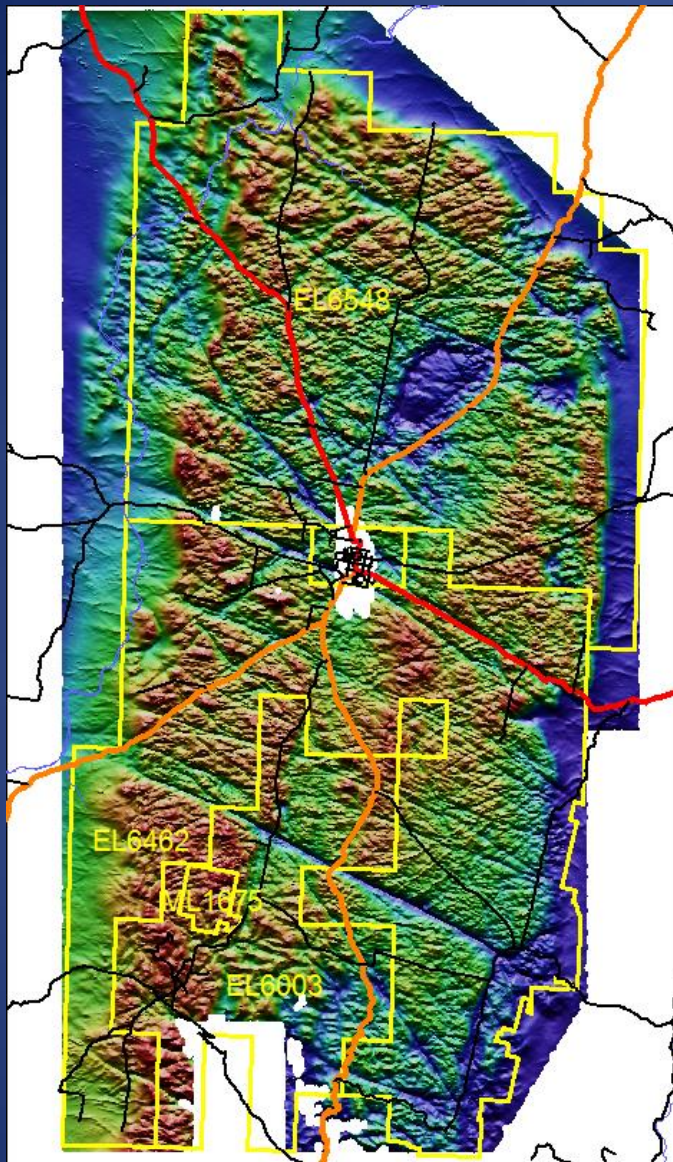
Dargues



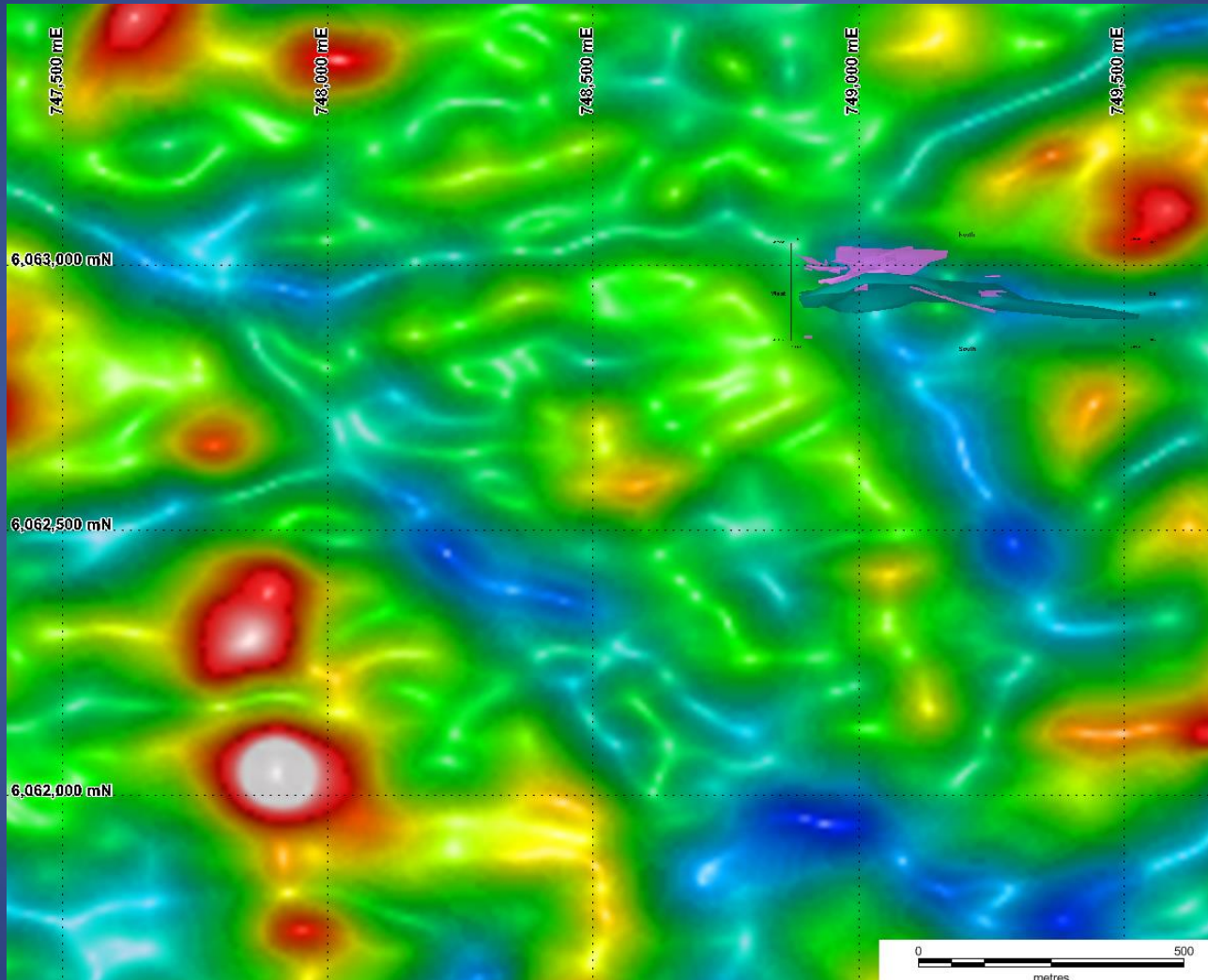
Chloritic' (chlorite/carbonate/amphibole).

Sericitic' (illite/muscovite/smectite +
chlorite/carbonate);

Pyrophyllitic' (pyrophyllite/alunite+chlorite);

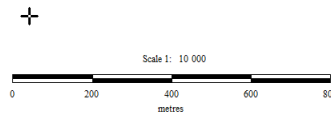
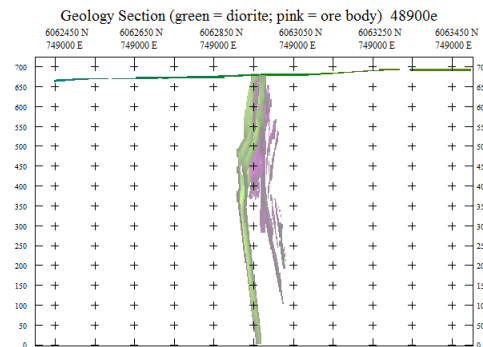
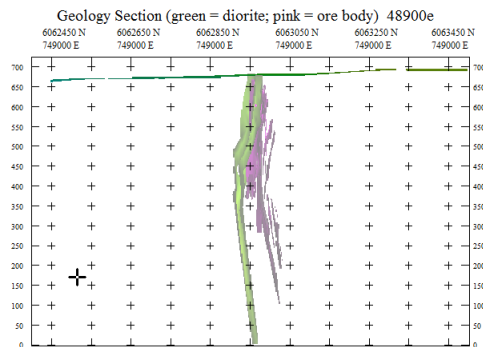
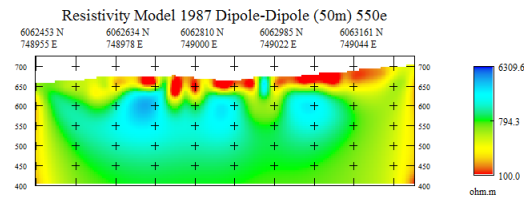
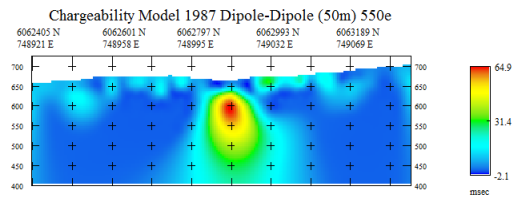
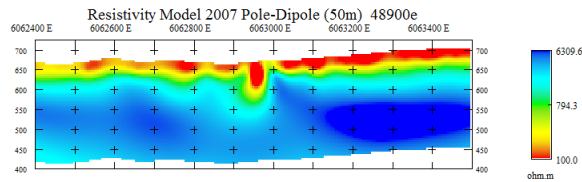
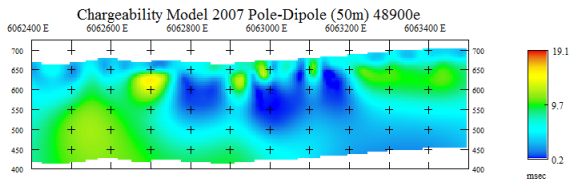


RTP Image

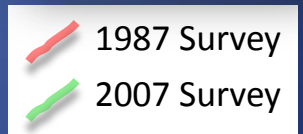
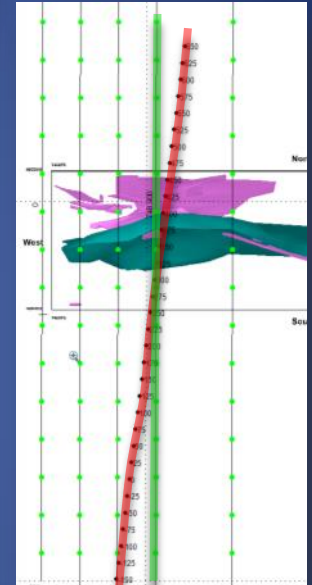


IP Surveys Comparison

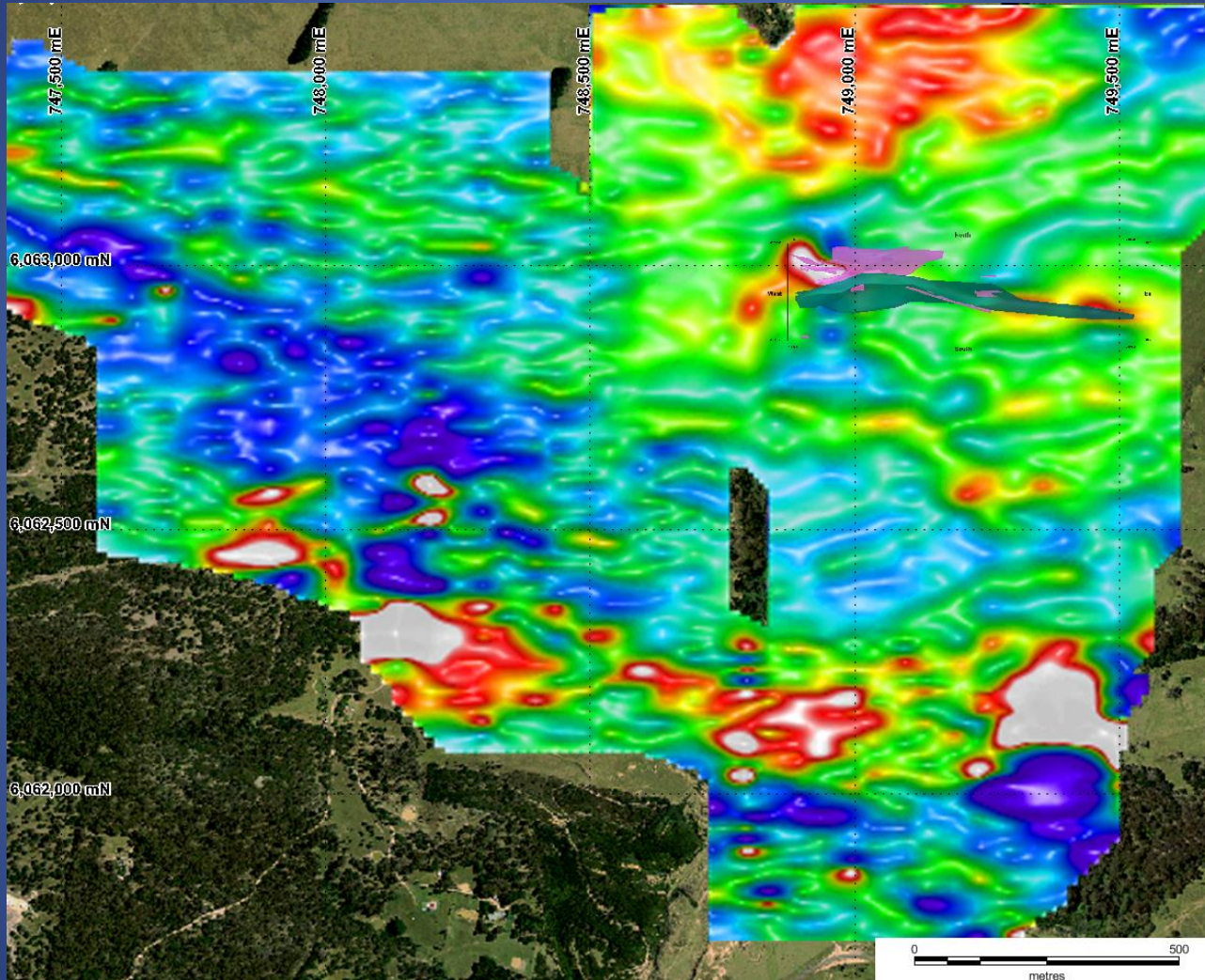
Model of Pole-Dipole Data 2007 (25m) Vs Dipole- Dipole Data 1987 (50m)



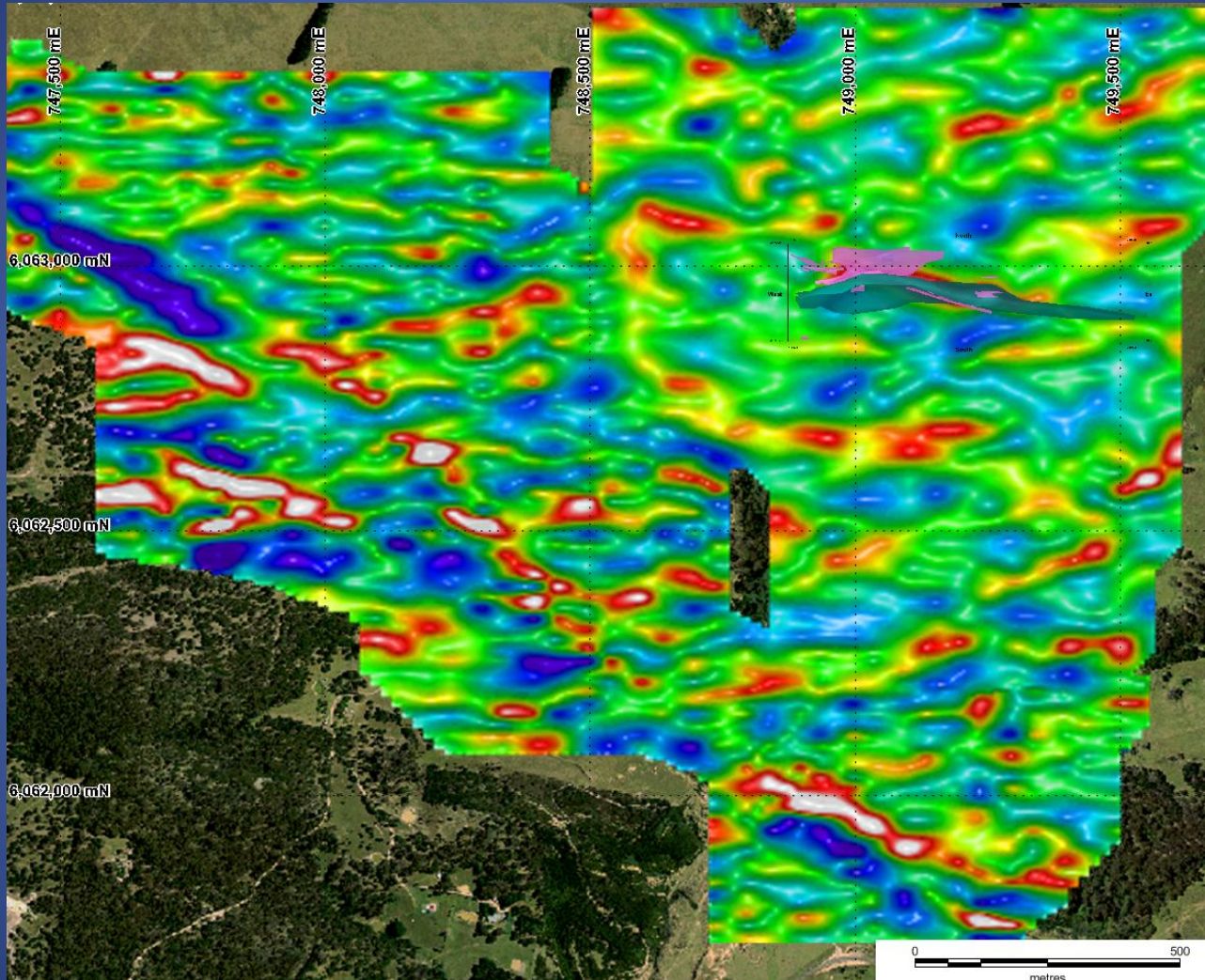
Location Plan



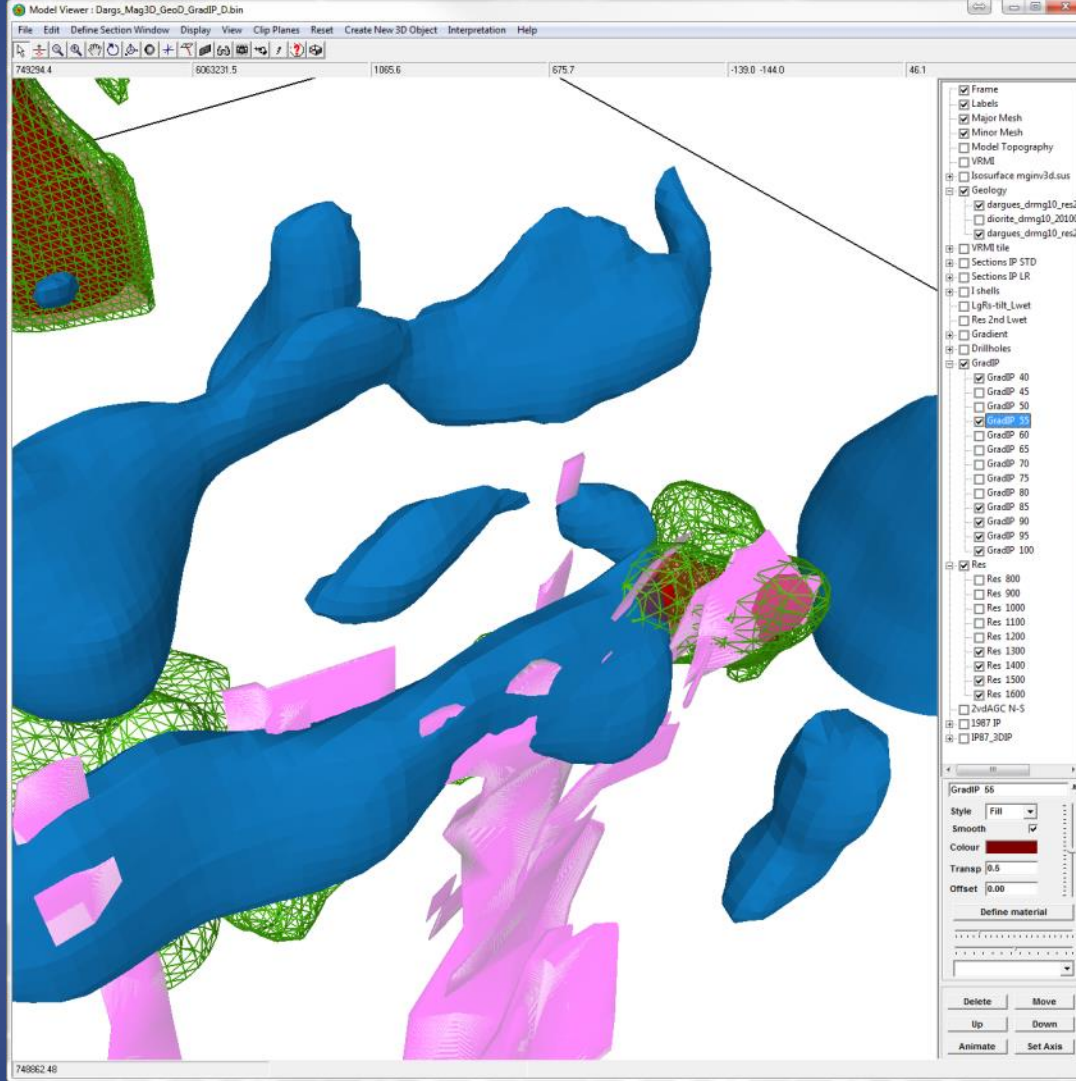
Gradient Array - Chargeability Image



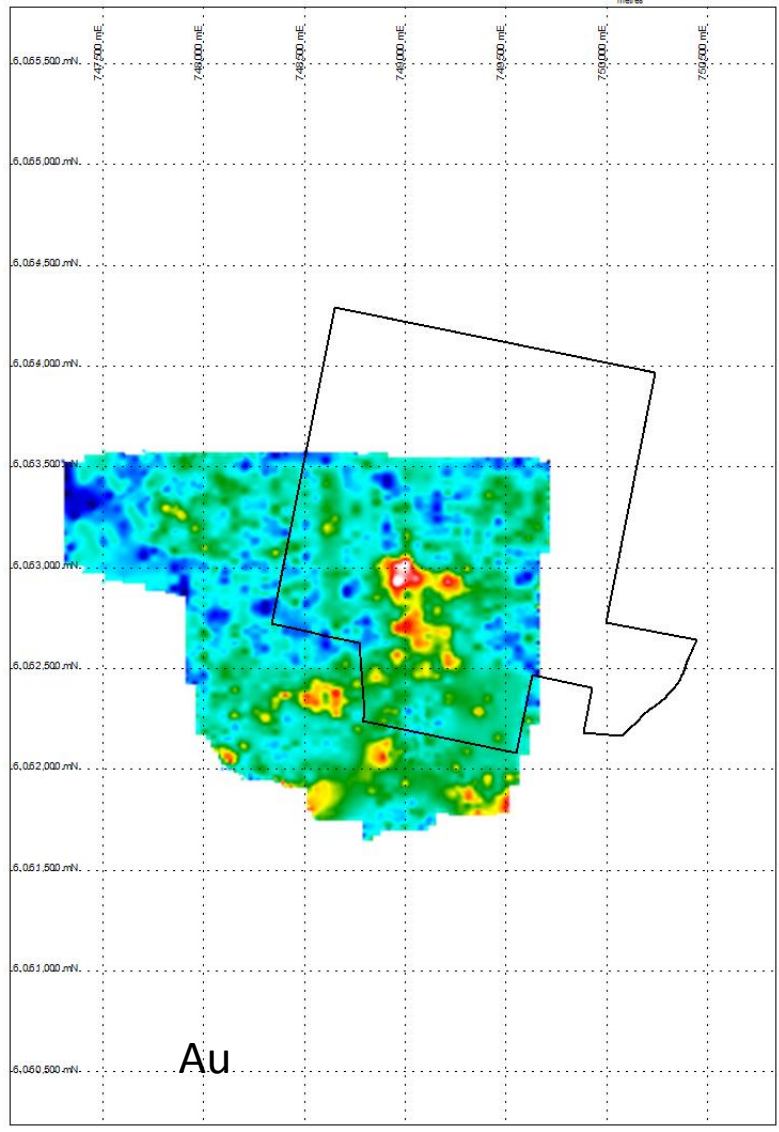
Gradient Array - Resistivity Image



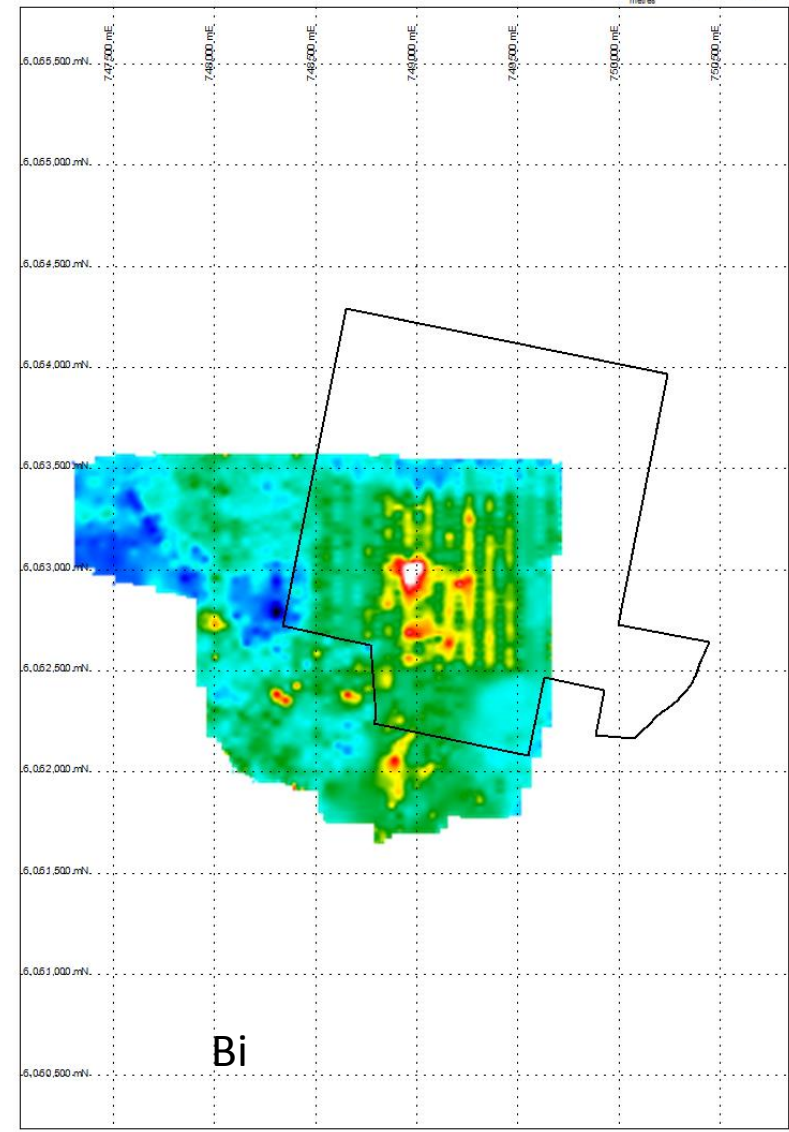
3D Model snapshot

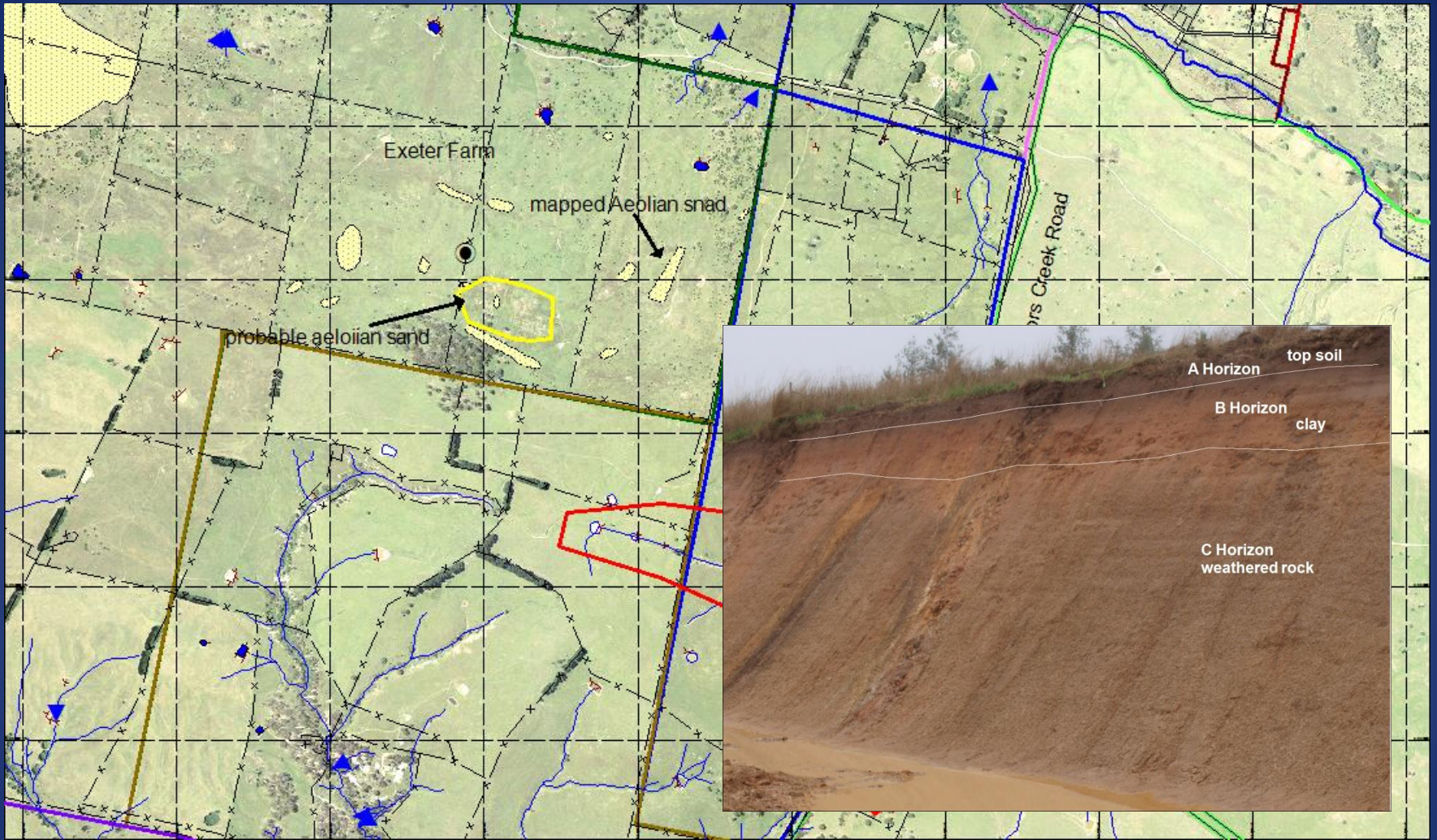


0 125 250 500 Scale 1:20,000
metres



0 125 250 500 Scale 1:20,000
metres



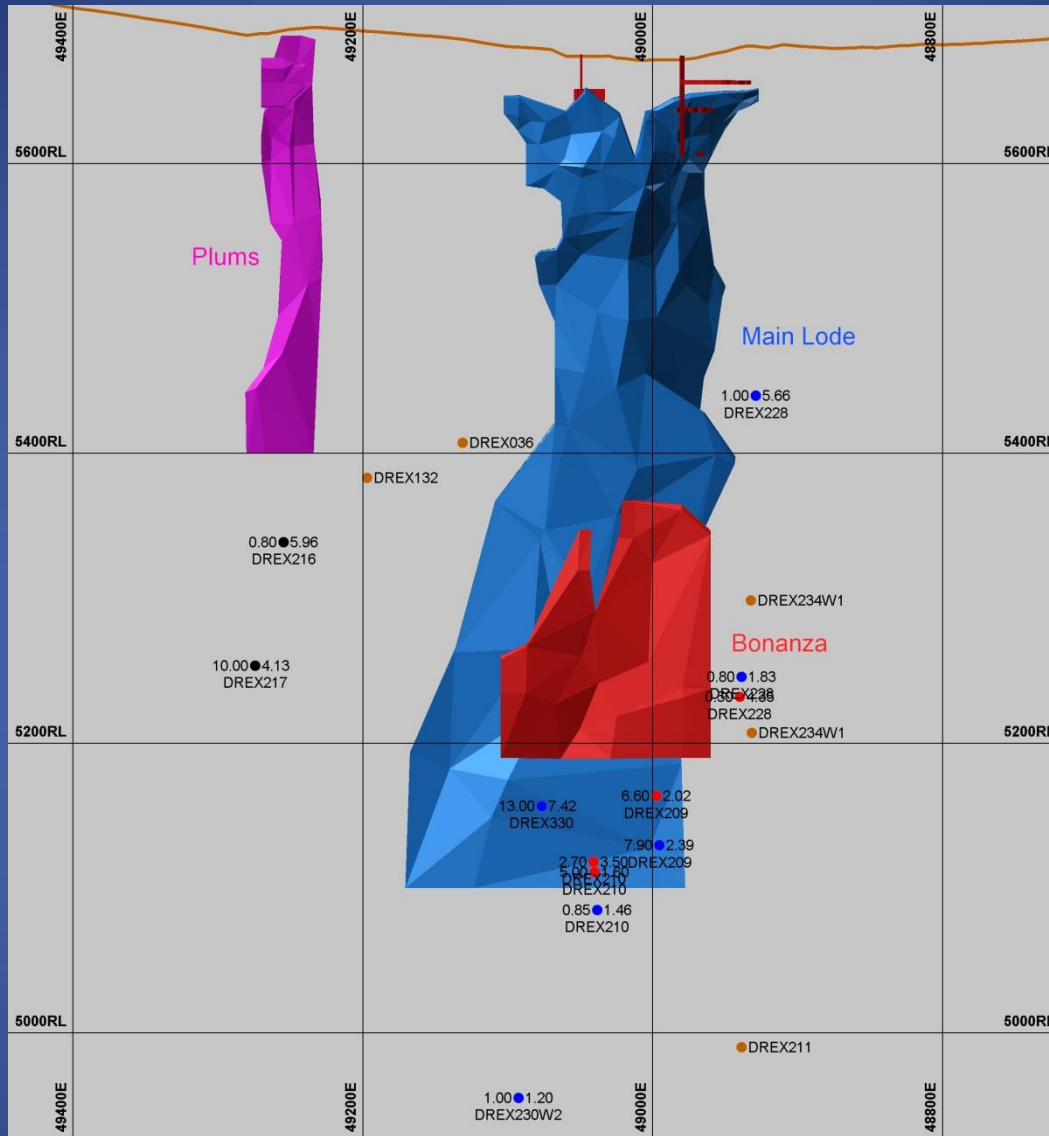


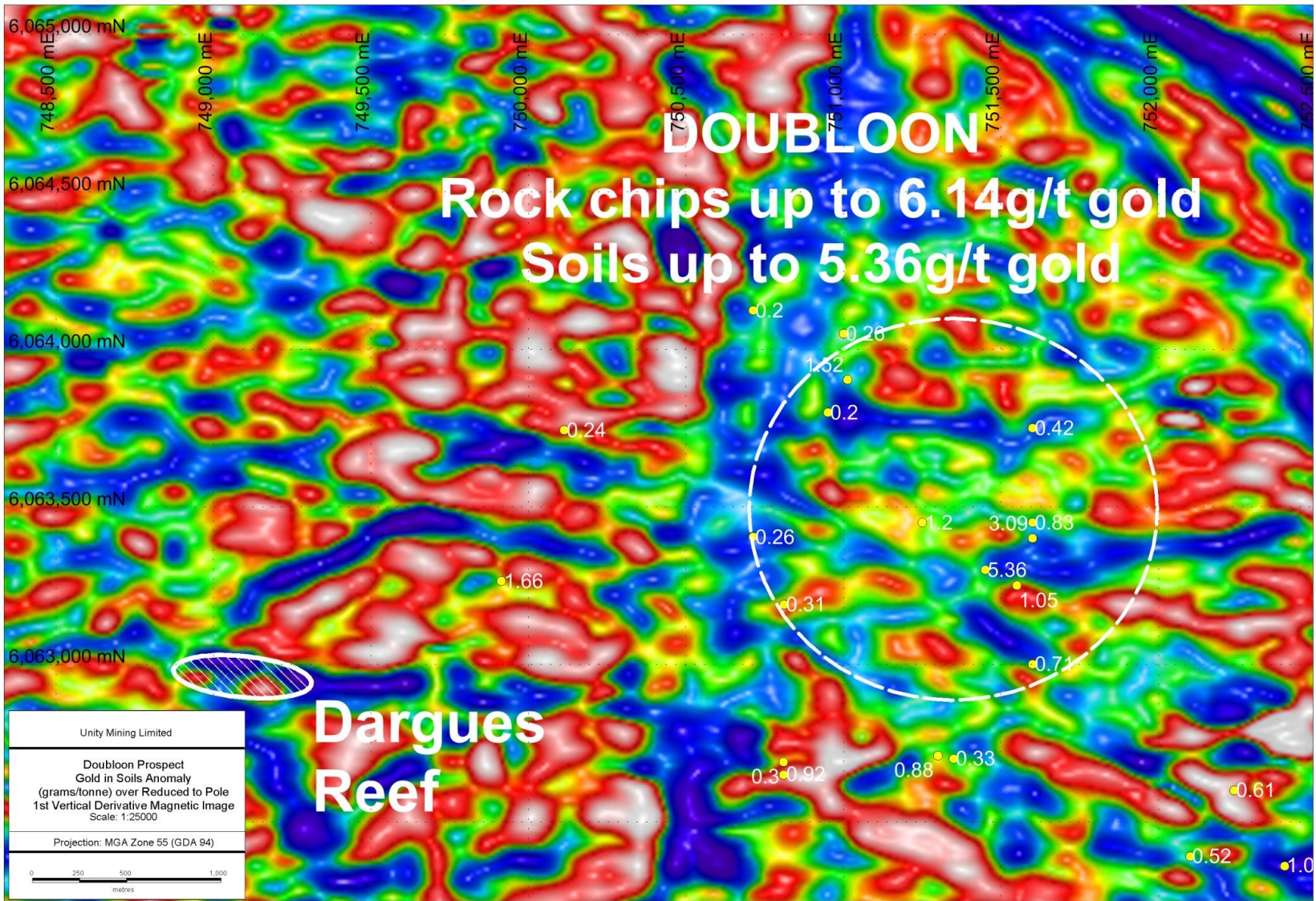
In light of this knowledge the strategy is as follows:

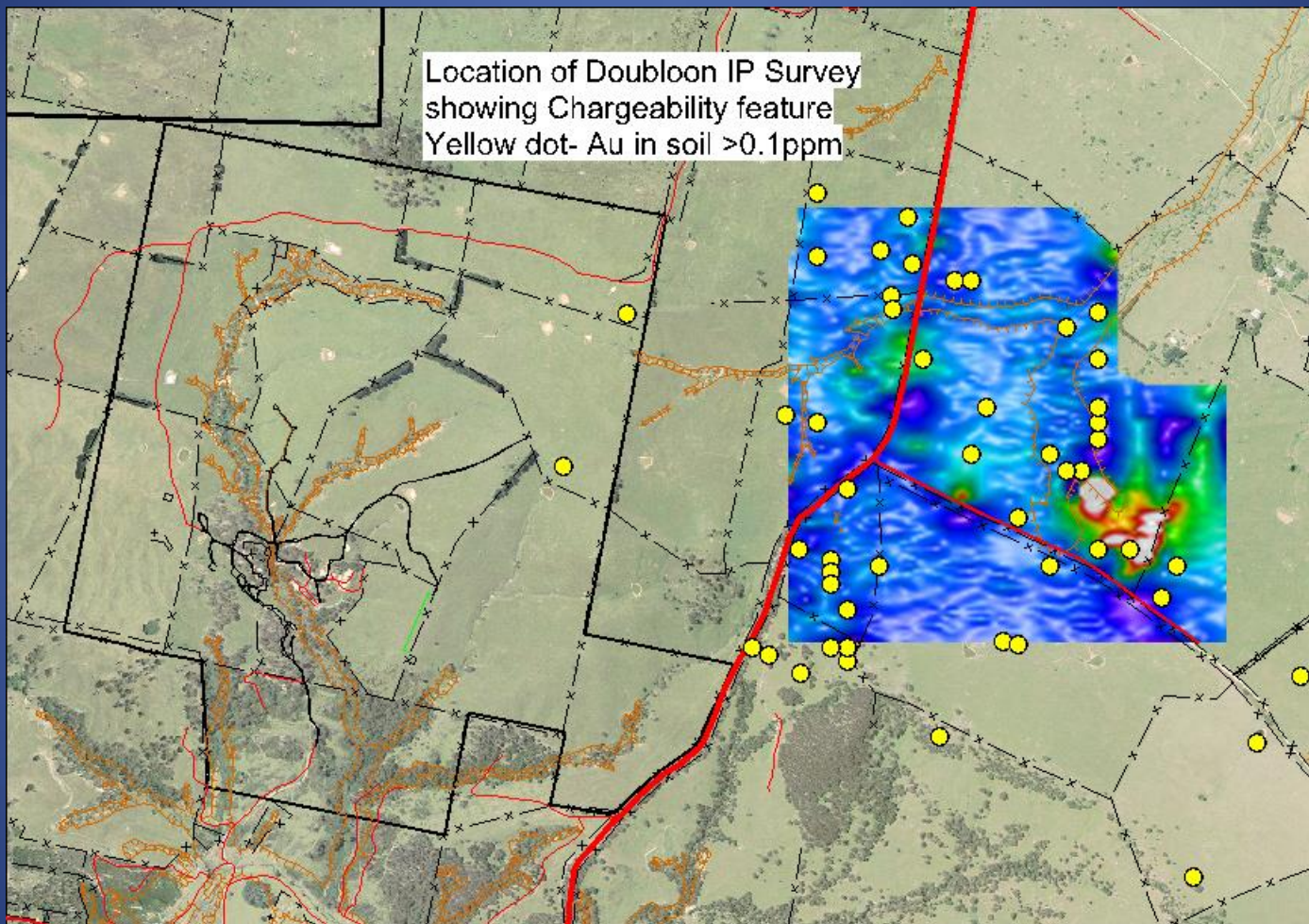
1. Prioritise the sericitic zone on the ASTER map
2. Identify structures with magnetic lows
3. Gradient array I.P with chargeability and resistivity features
4. Soil sampling – B Horizon – Au or Bi
5. Drill

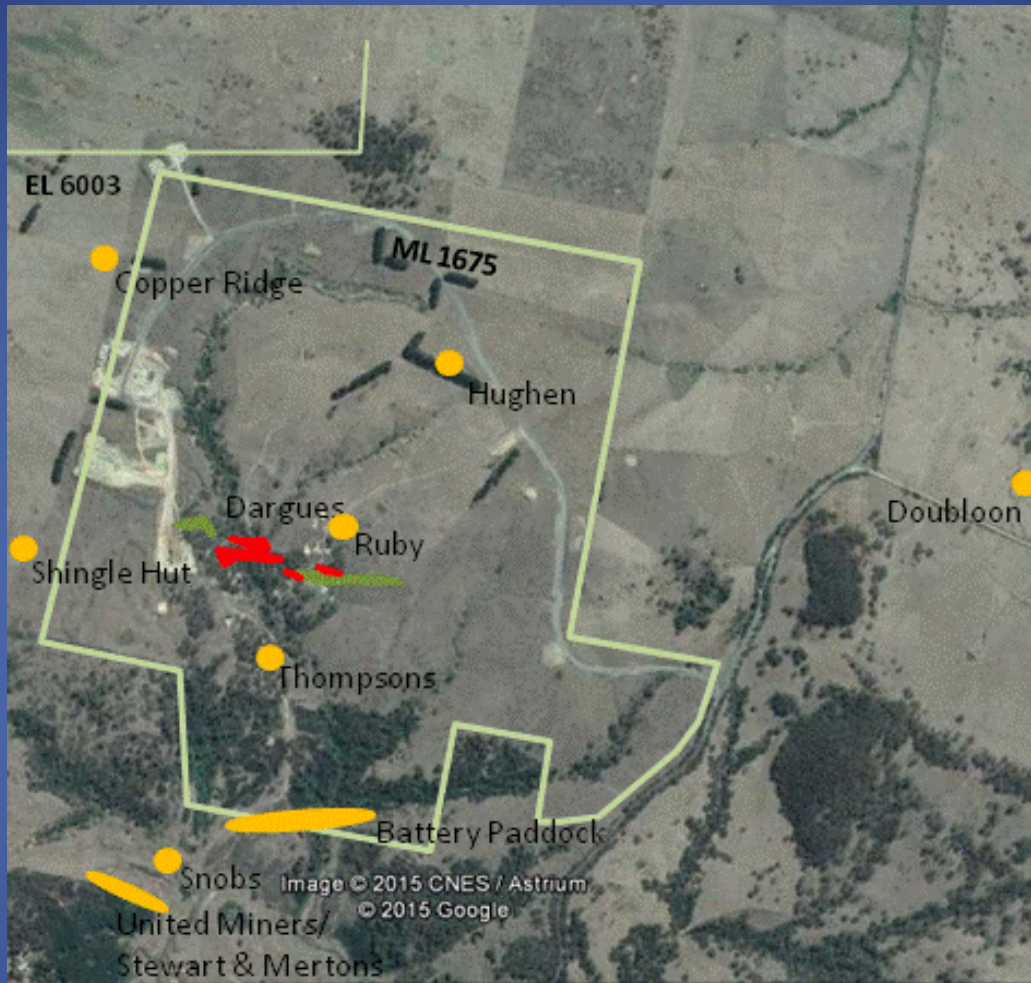
10 targets prioritised on this basis, in addition to E and W extensions of Dargues itself.

Dargues is also open at depth. The last drill hole reported
13 m @ 7.4 g/t au









Hang in there!!!



Acknowledgements

Greg Cozens Dave McInnes Drazen Vukovic