

MILC & NFILC



Mark Arundell

On behalf of NSWMC



Strategic KPIs for the DRG

- *Strategic* KPIs to monitor the effectiveness of the DRG in supporting NSW's minerals industry have been agreed with the DRG through a working group to the committee.
- The strategic KPIs include:
 - 1) NSW to receive **8% of total mineral exploration** expenditure in Australia over the five years to 2020, increasing to 10% over the five years to 2025. (Currently 8%)
 - 2) NSW to receive **5% of total mining capital expenditure** in Australia over the five years to 2020, increasing to 7% over the five years to 2025. (Currently 3-4%)
 - 3) NSW's ranking in the **Fraser Institute's Policy Perception Index to be at least 5th** in Australia by 2020, increasing to 3rd by 2025. (Currently last - 7th)
- Provide feedback on DRG's performance via the Fraser Institute Survey.

MILC



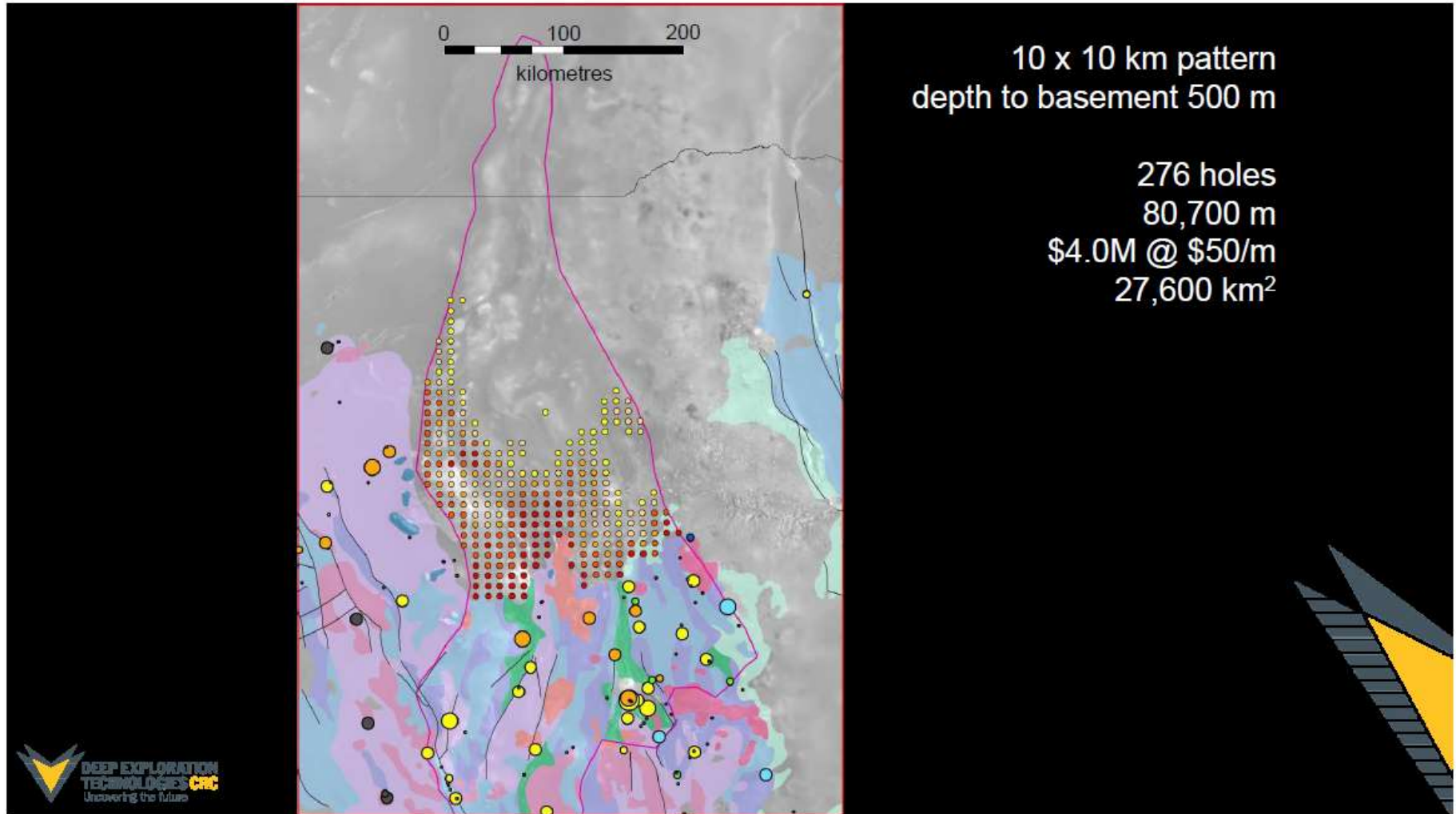
- Minerals Industry Liaison Committee (*Quarterly Meetings*)
- Service Delivery Standards
 - Down for last quarter, however good news: focus on processing the backlogged titles, many lingering in the process for years, as part of a dedicated 'Clearance Project'.
 - NSWMC has requested additional *operational* KPIs to monitor future processing of titles, e.g. processing of final instruments from acceptance (10 days) which are still being considered by the DRG.
- Access to Government Owned Lands
 - DRG look at difficulties with accessing government owned land for exploration & inconsistencies between responsible departments.
- Fossicking
 - More LGAs are showing interest in being declared fossicking districts.
- Contact Belinda Bird at NSWMC
- bbird@nswmining.com.au; 0459840897

NFILC



- New Frontiers Industry Liaison Committee (*Biannual*)
 - Meeting May 3rd, 2017
 - Ross Cayley (GSV) – seismic in southern NSW
 - Richard Hillis – DET CRC & MinEx CRC (2018+)
 - Coil tube drilling
 - MinEx CRC – 10 years - \$80M
 - National Drilling Initiative

NFILC



10 x 10 km pattern
depth to basement 500 m

276 holes
80,700 m
\$4.0M @ \$50/m
27,600 km²

NFILC

Follow Up Drilling: Macquarie Arc

Surveys

Companies

- Prioritise areas from 10 x 10 km drilling based on identification of key geological relationships
- Say ~25% or ~70 priority holes identified

- Prioritise areas for Diamond Drilling (core capture for detailed geological studies and archive)
- Say 10% of priority holes or ~7 DDH (average depth ~300m)
 - 2100 m drilling @ \$500/m
 - ~\$1.05M
 - **Potential outcome: detailed geological understanding, geochronology, petrology, processes**

- Close down spacing to 5 x 5 km in priority areas to identify geochemical halos
- ~3 x 70 = 210 new holes (average depth ~300m)
 - ~63,000 m drilling @ \$50/m
 - ~\$3.15M
 - **Potential outcome: identify targets at prospect scale**

- Close down spacing in target areas toward ~1 x 1 km to identify core zones of halos using combination of geochemistry and alteration mineralogy
- Number and nature of holes strongly project dependent
 - Responsibility of explorer
 - **Potential outcome: discovery**



MILC Committee Meeting (3 August 2017)

Service Delivery Standards

- Service Delivery Standards were down for last quarter, however this is mostly good news: the main reason for this is the focus on processing the large quantity of backlogged titles, many lingering in the process for years, as part of a dedicated 'Clearance Project'.
- NSWMC has requested additional *operational* KPIs to monitor future processing of titles, e.g. processing of final instruments from acceptance (10 days) which are still being considered by the DRG.

Access to Government Owned Lands

- A dedicated project has also been agreed to with the DRG to look at difficulties with accessing government owned land for exploration and inconsistencies between responsible departments. We will update further as this progresses.

Fossicking

- More LGAs are showing interest in being declared fossicking districts.

Minview Update

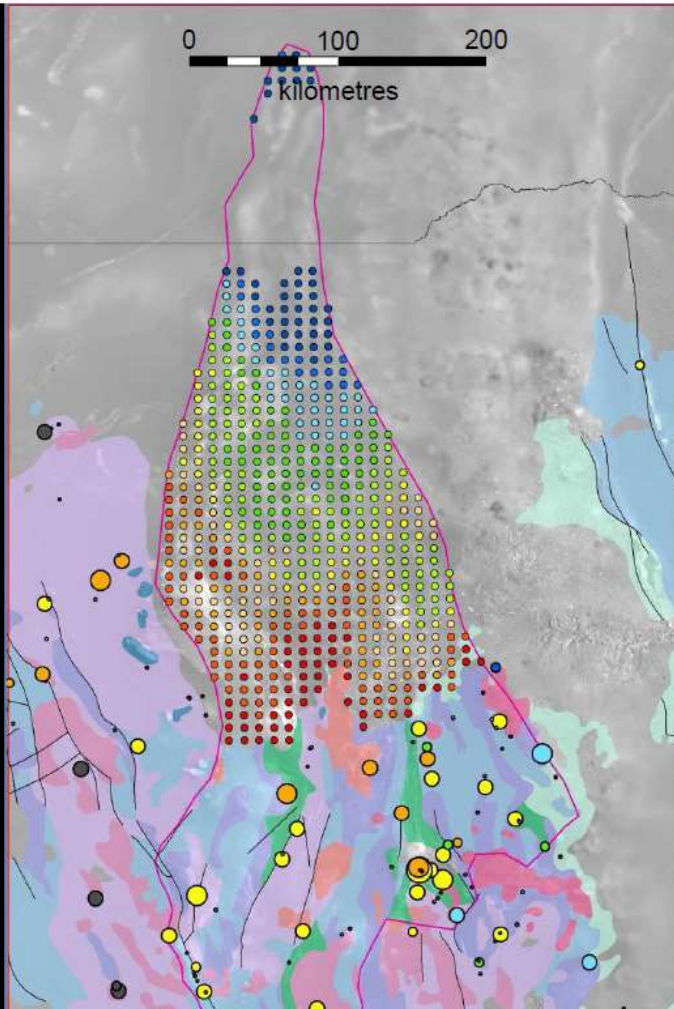
- Updated two weeks ago, but members are reporting issues. Please advise NSWMC of any issues you may have with it.

Fraser Institute Survey



- The annual survey of mining companies will begin in two weeks and continue until Friday October 27th.
- The data collected will allow the survey team to identify those provinces, states, and countries that pose the greatest barriers to investment in the mining sector, as well as the reasons underlying any significant shifts in the jurisdictional rankings from a year ago.
- **Our DRG now has a KPI based on its performance in this survey.**
- Executives, managers, and other experts with mining exploration and development companies, and their advisors, are asked to complete the 2017 survey questionnaire with respect to jurisdictions about which they are knowledgeable.
- **Please email: ashley.stedman@fraserinstitute.org or contact NSWMC to request an invitation to participate.**

NFILC



10 x 10 km pattern
depth to basement 1000 m

540 holes
276,500 m
\$13.8M @ \$50/m
54,000 km²